

# The Art of Gravure

**Moment makes your uniqueness**

**Uniqueness defines your home**

**Home enables our story complete**

# D

**vol. 4**

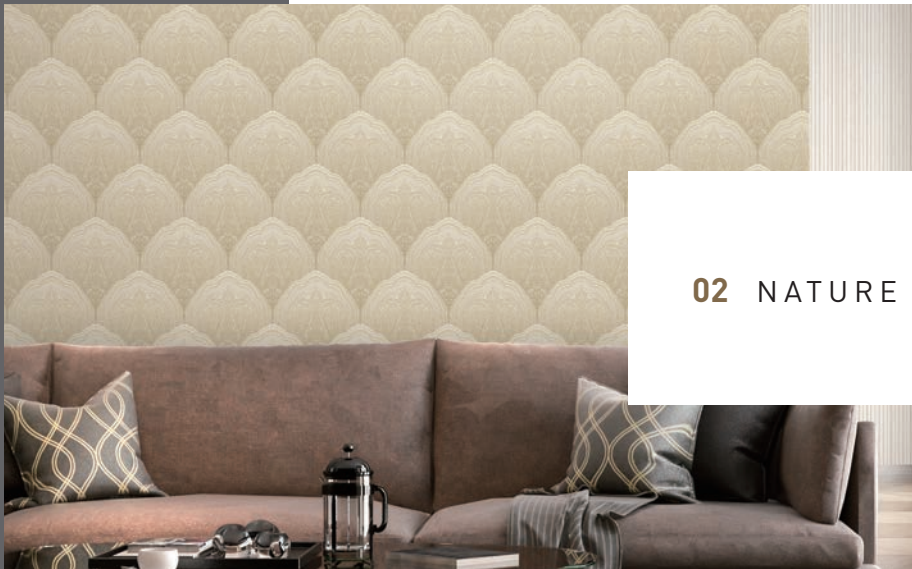
*An invitation to  
wall fashion*



**KS WALLCOVERINGS**



## 01 TEXTURE ART



## 02 NATURE AT THE FORE



## 03 LIVABLE LUXURY





**04** METALLIC MODERN



**05** HIGH LIGHT



**06** KIDS



LIVABLE  
LUXURY

1833-3

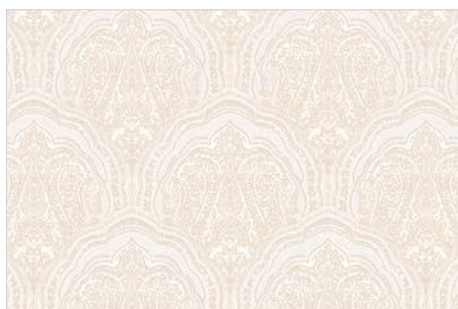


# GLAMOROUS

TALENT / SPACES / STYLE



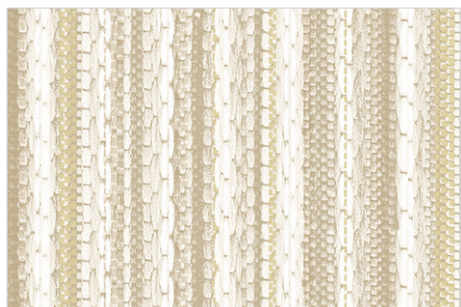
1833-1



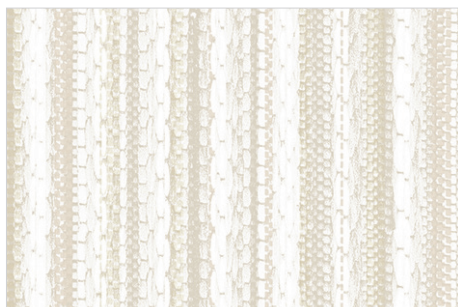
1833-2



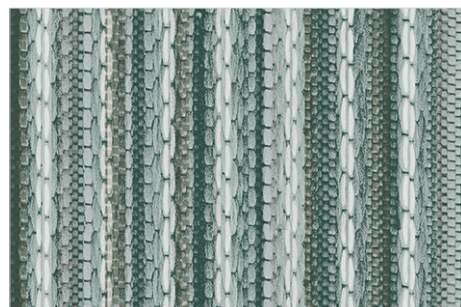
1833-3



1832-1



1832-2



1832-3



1833-1 • 1832-1



LIVABLE LUXURY

1833-3





METALLIC  
MODERN

1828-4



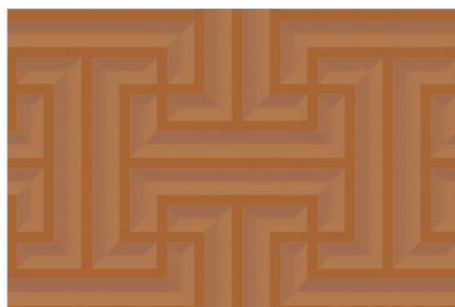
1828-1



1828-2



1828-3



1828-4





## METALLIC **MODERN**

**1828-3**

Currently, geometric forms are popular. With Rhythm the tile pattern is consciously obscured, making the transitions more subtle and the colour gradations more natural.

Modernism and Natural coexist and break down the territorial division of space. Walls evolve so that individuals can decorate any space they want. The boundaries between the outside and the interior, the boundaries of living room and kitchen, and the boundaries of rest and working space are also blurred, and flexible use of space becomes more and more important.



TEXTURE  
ART

1816-2



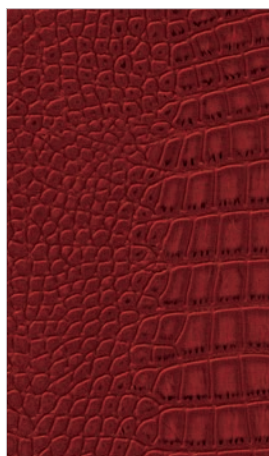
IS THIS THE MOST  
POWERFUL COLOR?



1816-1



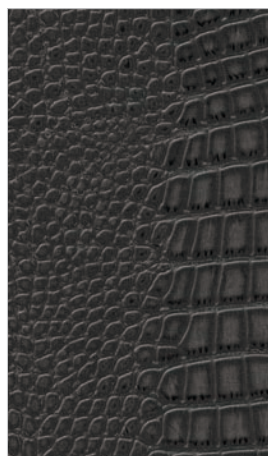
1816-2



1816-3



1816-4



1816-5







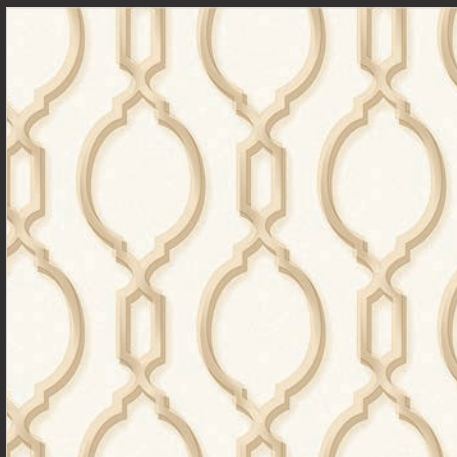


METALLIC  
**MODERN**

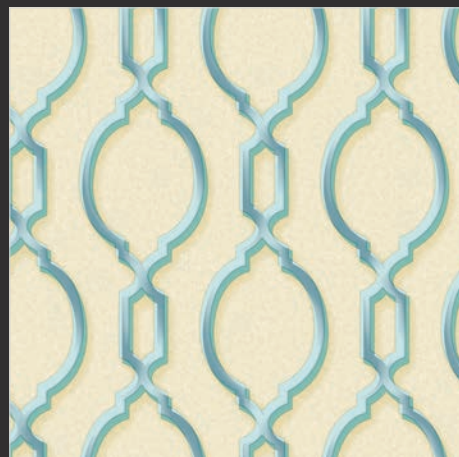
1818-1



1818-1



1818-2



1818-3





## METALLIC **MODERN**

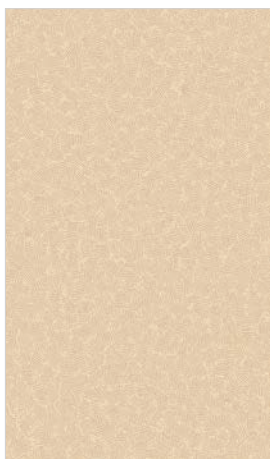
1818-2 • 1817-3



1817-1



1817-2



1817-3



1817-4



1817-5



1818-3







1825-3

Natural material elements develop freely, creating a natural and comfortable atmosphere.

# TROPICAL





NATURE  
AT THE FORE

1825-2



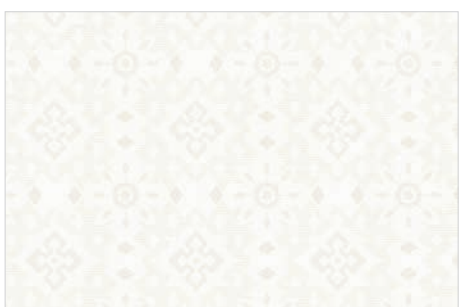
1825-1



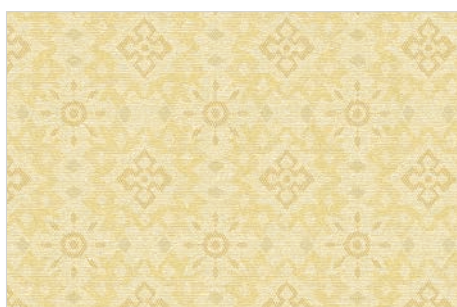
1825-2



1825-3



1824-1



1824-2



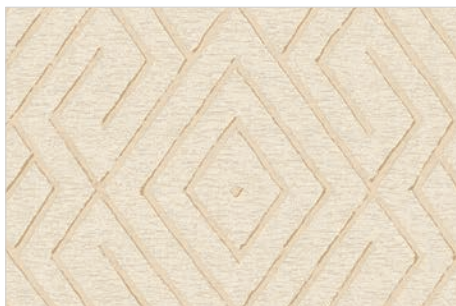
1824-3





## METALLIC MODERN

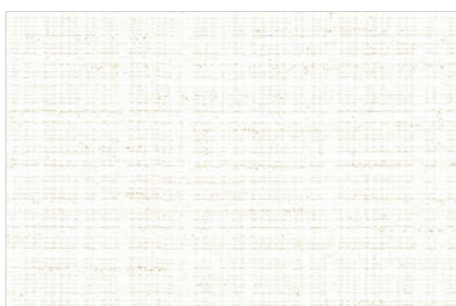
1829-2



1829-1



1829-2



1752-1



1752-2





METALLIC MODERN

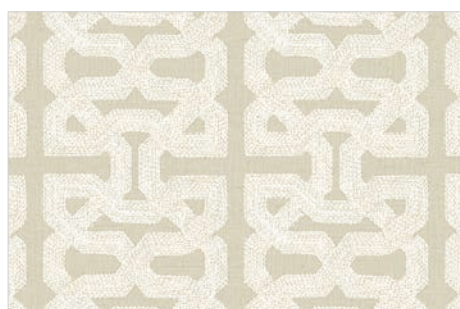
1829-1



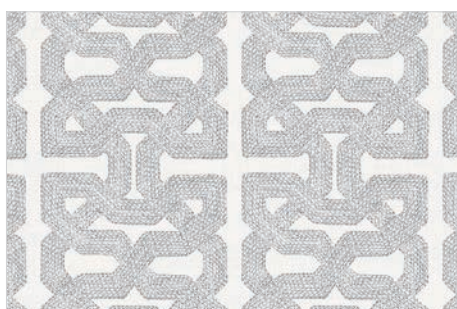


**METALLIC  
MODERN**

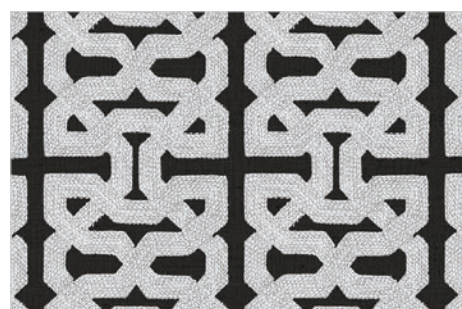
1826-3



1826-1



1826-2



1826-3



1740-1



1740-2



1740-3



1826-1



METALLIC MODERN

1826-2







---

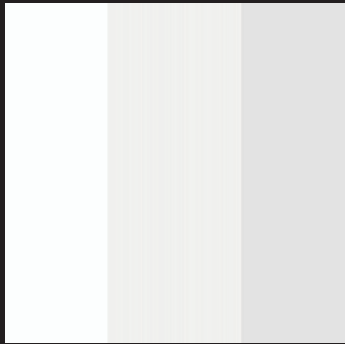
Currently, geometric forms are popular. With Rhythm the tile pattern is consciously obscured, making the transitions more subtle and the colour gradations more natural.

Modernism and Natural coexist and break down the territorial division of space. Walls evolve so that individuals can decorate any space they want. The boundaries between the outside and the interior, the boundaries of living room and kitchen, and the boundaries of rest and working space are also blurred, and flexible use of space becomes more and more important.

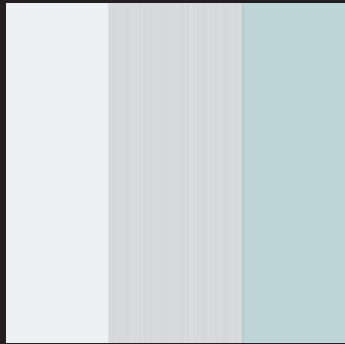
## Metallic Modern

1827-4

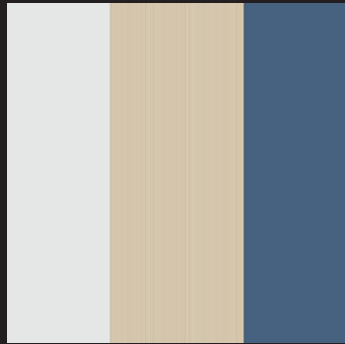




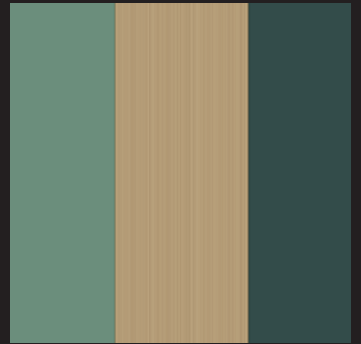
1827-1



1827-2

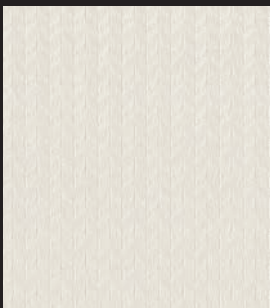


1827-3

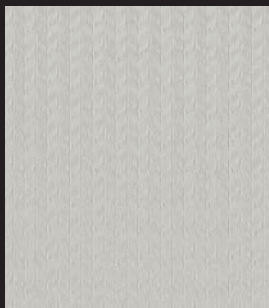


1827-4

METALLIC MODERN



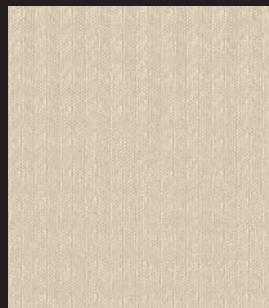
1822-1



1822-2



1822-3



1822-4



1822-5



1827-1



1827-2

DARAE  
WALLCOVERINGS





---

Currently, geometric forms are popular. With Rhythm the tile pattern is consciously obscured, making the transitions more subtle and the colour gradations more natural.

## High Light



1808-2

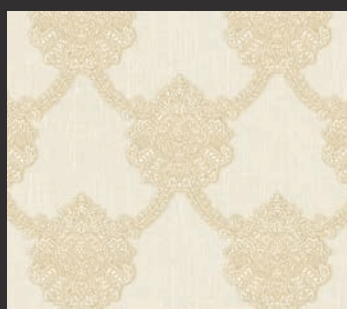


LIVABLE  
LUXURY

1831-1



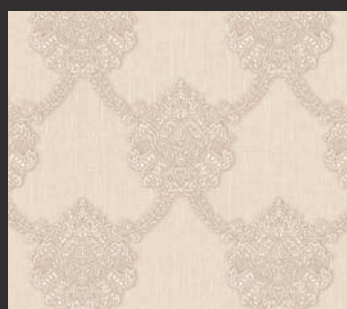
GLAMOROUS  
TALENT / SPACES / STYLE



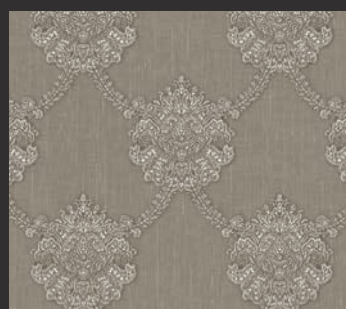
1831-1



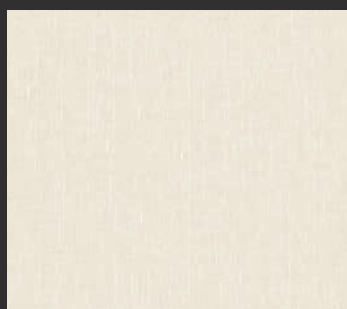
1831-2



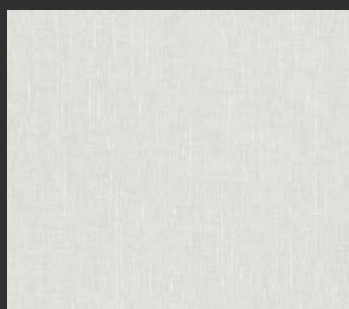
1831-3



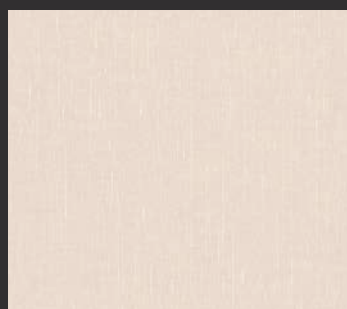
1831-4



1830-1



1830-2



1830-3



1830-4



1831-3



## LIVABLE LUXURY

The development of modern interpreted patterns away from traditional classics is new.  
Elegance and feminine delicacy are alive and add dignity to the whole space.

1831-4

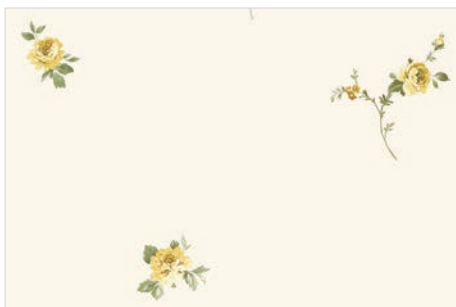






## NATURE AT THE FORE

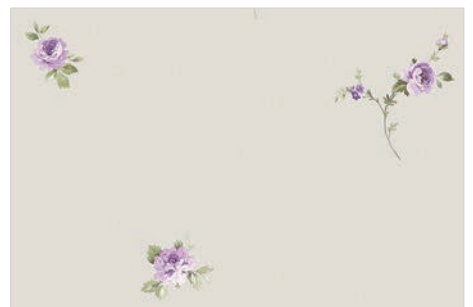
1823-2



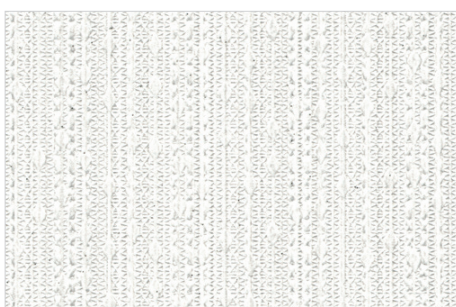
1823-1



1823-2



1823-3



1748-1



1748-2



1748-5



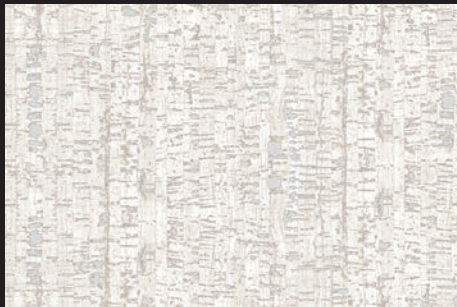
○ 1823-3







TEXTURE ART



1821-1



1821-2



1821-3



1821-3





---

The rough texture and calm color of the wall combine to create a stable atmosphere. Crossing color tones with the same texture adds to the abundance of space.

## Texture Art



1796-3





## High Light

Currently, geometric forms are popular. With Rhythm the tile pattern is consciously obscured, making the transitions more subtle and the colour gradations more natural.



1814-3



1747-1



1747-2



1747-3



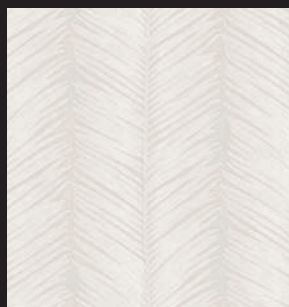


## Nature at the Fore

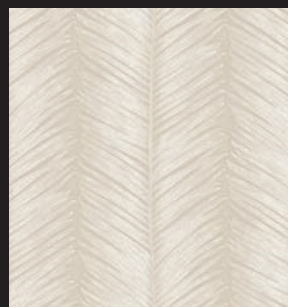
Natural material elements develop freely, creating a natural and comfortable atmosphere. The colors of nude tones and soft tones give warmth and comfort and fill the entire wall with elements of nature.



1815-1



1793-1



1793-2



1793-3





---

The rough texture and calm color of the wall combine to create a stable atmosphere. Crossing color tones with the same texture adds to the abundance of space.

## Texture Art



1799-2

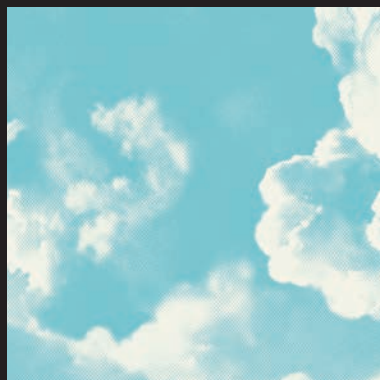




---

## Nature at the Fore

Natural material elements develop freely, creating a natural and comfortable atmosphere. The colors of nude tones and soft tones give warmth and comfort and fill the entire wall with elements of nature.



1809-3



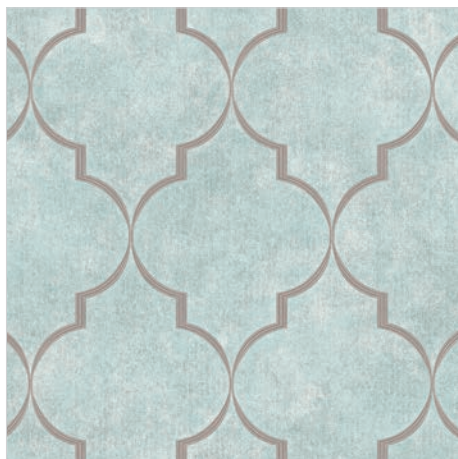


METALLIC  
**MODERN**

1804-2



1804-1



1804-2



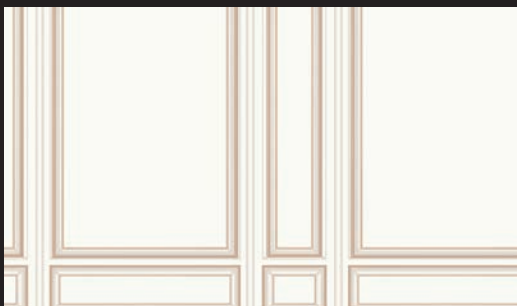
1804-3



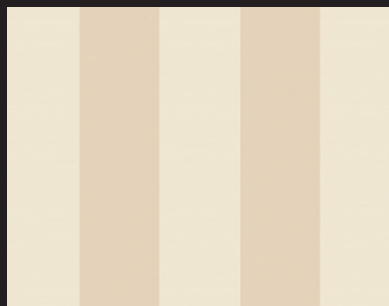


## High Light

Currently, geometric forms are popular. With Rhythm the tile pattern is consciously obscured, making the transitions more subtle and the colour gradations more natural.



1798-1



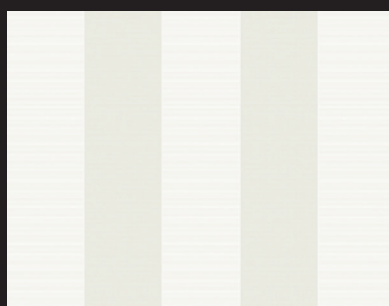
1794-2



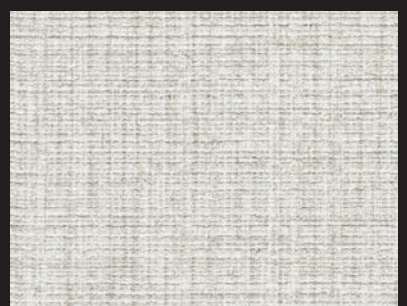
1794-6



1795-1



1794-1



1752-4





## LIVABLE LUXURY

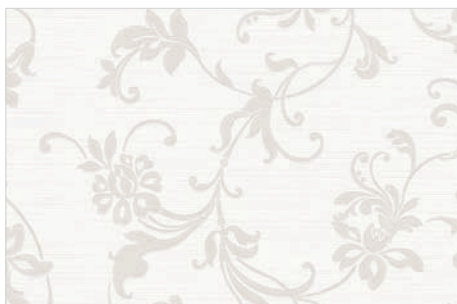
1735-1



1735-1



1735-3



1739-1



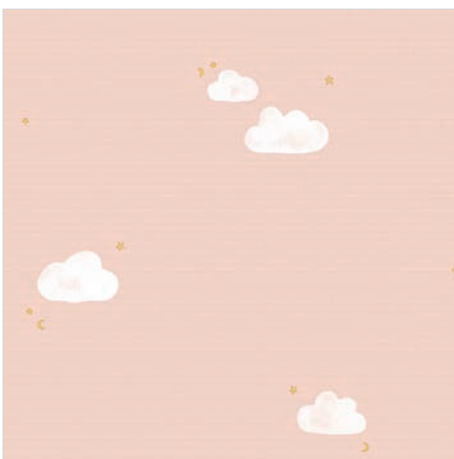
1739-2



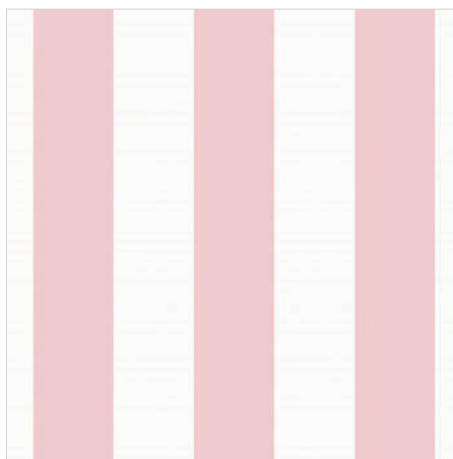


# KIDS

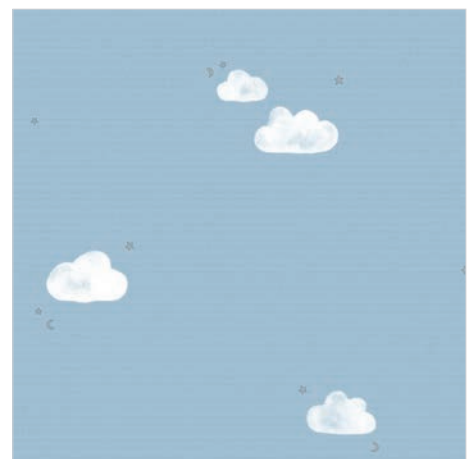
Lovely room interior for happy kids



1820-1



1794-3



1820-2



Lovely room interior for happy kids



1819-2



**A Representative Korean Wallpaper**  
since 1979



[www.ksgdw.com](http://www.ksgdw.com)